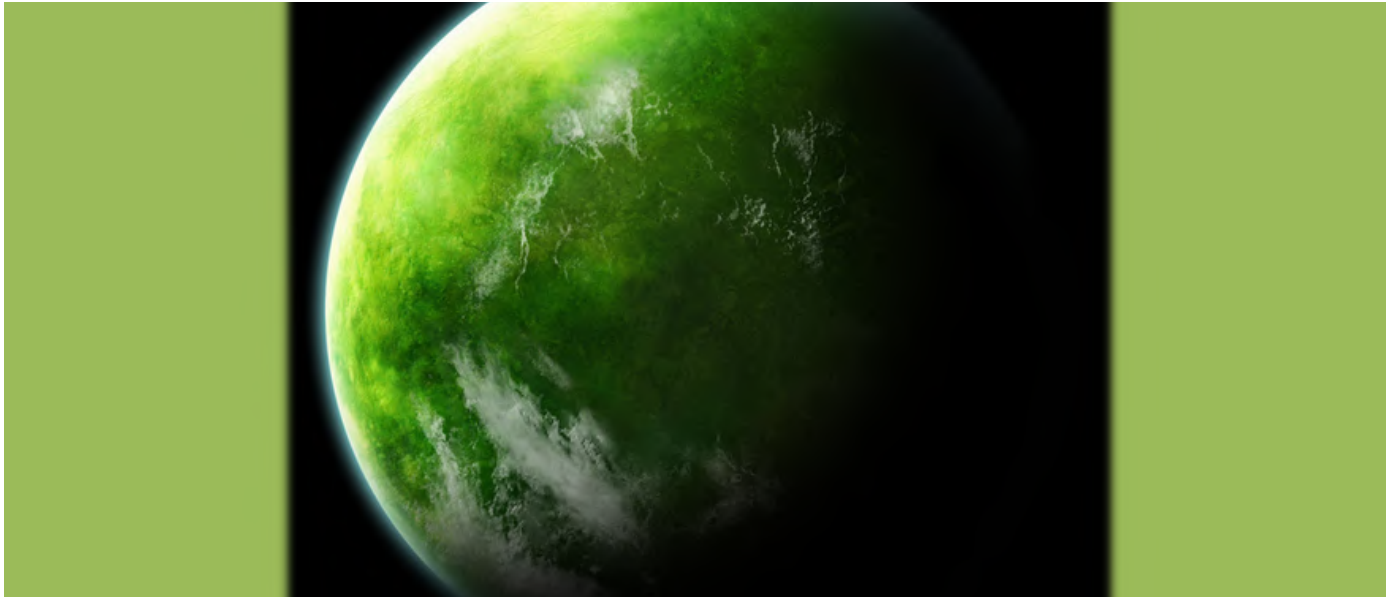


THE GREEN EMPIRE OF THE EAST AND THE WEST'S WEB

Micronations, Plant Commanderries, Inter-municipal cooperation and New forest governance for a powerful societal empire



A VAST PARTICIPATORY EMPIRE

SOCIETAL

ECOLOGIST

STRONGLY ENTERPRISING

FAIR

SPIRITUAL

The equivalent of a massively multi-user real-time strategy game (close to the ideology of the “Civilization” and “Age of Empires” games) - But not virtual!

by Paul Elvere Valérien DELSART

The EL4DEV confederation / Green Empire of the East and the West will recognize and cooperate with any micronation (nation not recognized by the international community):

- Ø proposing an alternative and complementary model of citizenship based on ethics
- Ø defending the environment, respecting all forms of life, and promoting spirituality
- Ø calling for citizens' initiative and solidarity
- Ø working for cooperation, the social and solidarity economy, the revitalization of territories
- Ø working with sincerity for good local or global causes

The EL4DEV confederation / Green Empire of the East and the West intends to coordinate and facilitate the development of the latter by interconnecting them through various tools.

The interconnected infrastructures labeled "LE PAPILLON SOURCE" are the "commanderies" of the Green Empire of the East and the West

by Paul Elvere Valérian DELSART

These experimental cities and eco-landscape complexes are all self-managed and are similar in many ways to the commanderies of the military religious orders of the Middle Ages (such as that of the Templar Knights). These are **the infrastructures of the chivalrous order of the Green Empire of the East and the West :**

∅ These structures are the foundations of a spiritual and philosophical order, of a new cultural movement with a vocation to expand.

∅ They are the place of formation of the peoples and the Knights of the Empire: Chief Ambassadors of the Nations (Kings-philosophers) and Affiliate Ambassadors of the Nations (circles of wise men).

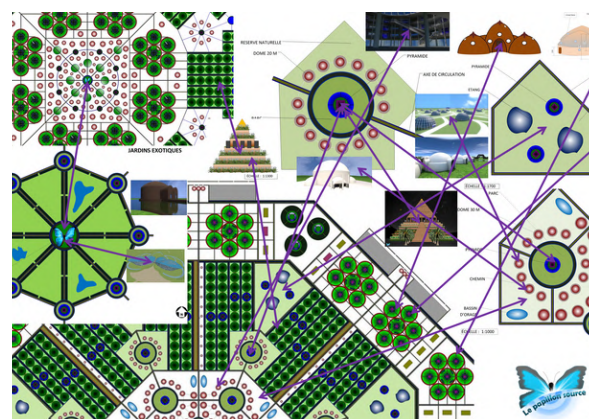
∅ They are similar to gigantic and beautiful fortified rural estates.

∅ **LE PAPIILLON SOURCE** designates various national constituencies made up either of a tourist mother city and several satellite eco-landscape complexes, all self-regulated and interconnected, or only of several satellite eco-landscape complexes . These places are sources of considerable income and places of gathering of skills which allow the Empire to set up and organize many societal projects.

∅ These are, in a way, large fortified experimental and educational farms comprising various buildings necessary for the life and activity of its visitors (accommodation, restaurants, conference rooms, experimental museums, entrepreneurial workshop rooms, schools and alternative universities, wellness areas, libraries, gardens, water basins and ecological swimming pools, areas of agricultural production in polycultures, etc.).

∅ These infrastructures ensure the production of many foodstuffs. They play an important societal role at regional level, by distributing surpluses free of charge to non-profit organizations and to the most disadvantaged individuals. They allow the enhancement of rural territories, through work to create agricultural eco-landscape spaces, the regeneration and improvement of local ecosystems and the tourist attraction they offer. Each structure may be mainly specialized in one type of production, but monocultures are prohibited. Individuals working on behalf of the Empire are employed there to maintain them.

It is therefore a question of hospital places installed on strategic locations or isolated and neglected territories within each nation of the world. They also allow local and regional populations to benefit from assistance, rest, education and comfort.



The Green Empire of the East and the West materialized by cooperation agreements between small municipalities

by Paul Elvere Valérien DELSART

Each country (specifically individuals and municipalities in these countries) will be able to finance the collaborative design and construction activities of these cities / complexes (whether they are tourist sites or simply aimed at regenerating degraded local ecosystems) thanks to a cross-national intercommunal program named "THE MUNICIPALITIES COUNTER-ATTACK".

The concept of THE MUNICIPALITIES COUNTER-ATTACK is simple; We encourage and invite the municipalities, in particular the smallest and the most isolated (less than 1000 inhabitants), to unite, to cooperate, to group together in National Economic Interest Groups with a 100% societal vocation (this is that is to say of general interest) , in order to co-finance in unified groups the development (participatory design + collective construction) and the operation (management + maintenance) of these cities and complexes.

The financing, design and construction of these infrastructures are modular and therefore take place in successive blocks / stages. The initiation of the process of establishing a city / complex in a designated locality is systematically done by the upstream construction of one or more vertical plant structures called "THE GREEN / VEGETAL / PLANT CALDERAS".

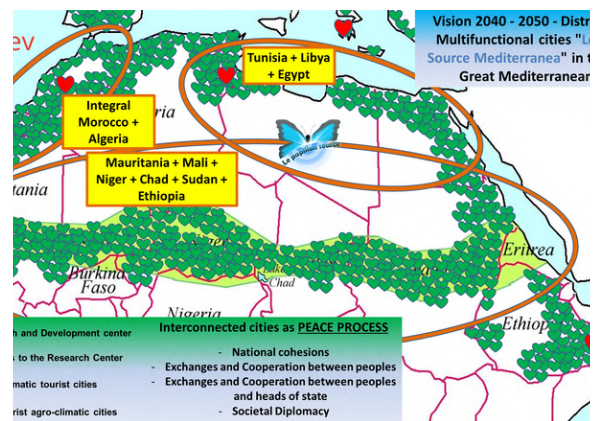
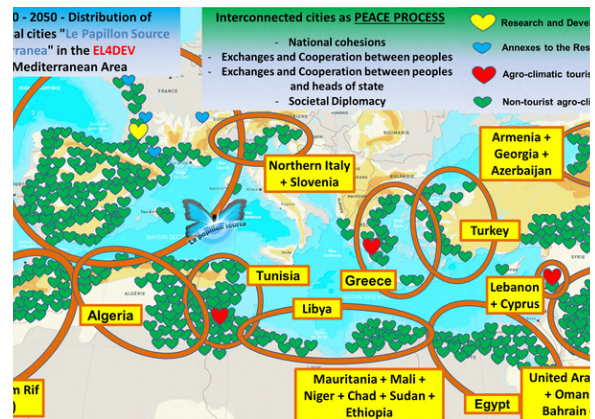
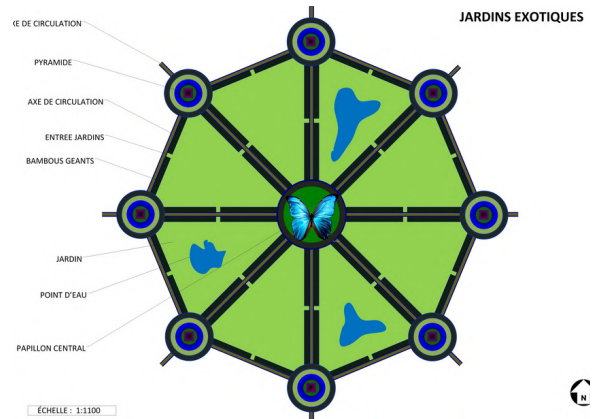
<http://www.eng.el4dev.org/>

<https://www.paul-elvere-delsart.net/>

<http://www.el4dev.com/>

<http://www.el4dev.com/papillon/>

<http://www.el4dev.net/>



The infrastructures labeled "LE PAPILLON SOURCE" are the tools of a new forest governance

by Paul Elvere Valérien DELSART

Within the Green Empire of the East and the West, new forests rich in biodiversity are being shaped by practices such as the edible forest-garden (Permaculture technique) and Terra Preta (black soil carbon-rich containing large amounts of charcoal). The edible forest garden is the art of imitating forest development with edible species to return to the Garden of Eden and achieve food self-sufficiency.

In the Green Empire of the East and the West, we create forests rich in biodiversity and very mainly edible from Polycultures (orchards and market gardeners) then we transform the natural forests of the whole world into food forests by the sowing of very many edible, fruit and honey plant species in existing ecosystems.

The thought is that nature is much more productive than the extensive agriculture practiced in the previous era, and the natural state of the earth is the forest. Through this process, **the Green Empire of the East and the West achieves and maintains food self-sufficiency throughout the world and dramatically increases biodiversity.**

The object is therefore to progressively "terraform" the planet, transforming it into a forest planet (reaching a forest plant cover of 90% of the world's land area), a bit like the moon of Endor in the STAR WARS fiction universe. This area is very important knowing that 4 centuries preceding this new era, 66% of the land was covered with forest. The century before this one, this area had fallen to only 30%.

